

What is Tutor iLMS ?

TUTOR INTELLIGENT LEARNING MANAGEMENT SYSTEM (iLMS)

Tutor Intelligent Learning Management System (Tutor iLMS) is an e-learning solution build on Semantic Technology platform. The system enhances learning experiences through cognitive profiling and learning objects. Apart from supporting enhancement on learning, the system also enables tracking and monitoring performances at various stages, from individual to state level.

- Easy to use
- Secure
- Customisable
- Cloud-computing
- Scalable



COGNITIVE PROFILING



An online Psychometric testing that will be taken by individual students.

- Identify Multiple Intelligence
- Distinguish Learning Style

FAIR ASSESSMENT COMPARISON

Tracking of students performances.

- Multi-modal assessment
- Weighted score questionnaires
- Various difficulty levels

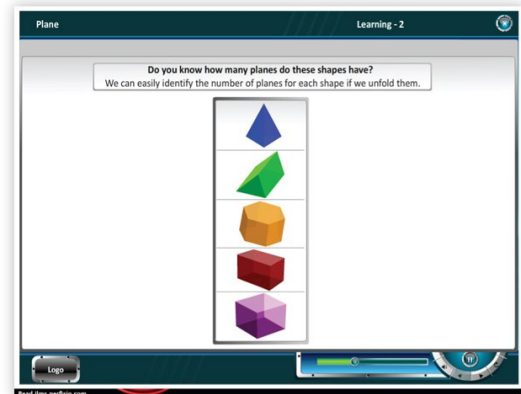
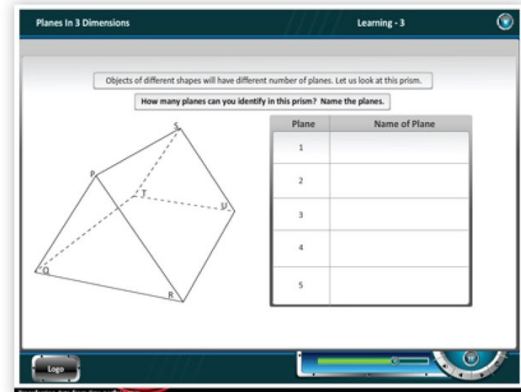
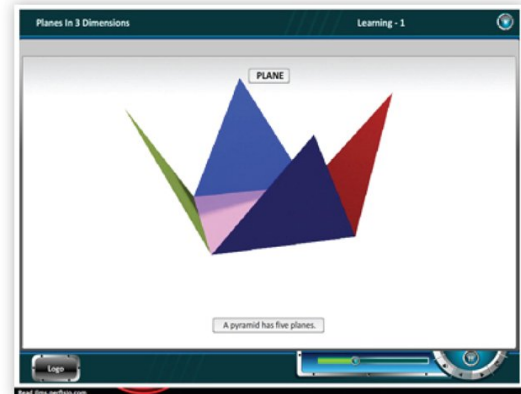


What is Tutor iLMS ?

PERSONALISED LEARNING MATERIALS

Various formats of learning objects that enhance learning experiences

- Based on individual learning style (visual, auditory, kinaesthetic, and read-write)
- Self-paced Learning
- New media (multimedia, audio-video, virtual reality and augmented reality)

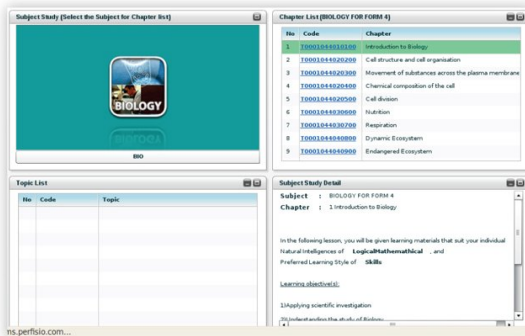


What is Tutor iLMS ?

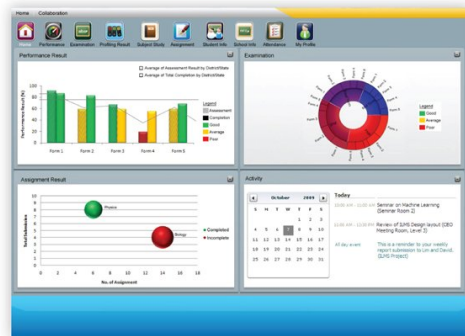
INTERACTIVE DASHBOARD

A personalised and single point of control for performance monitoring

- Students
- Teachers
- Headmaster
- Parents
- Federal



Student Dashboard



Teacher's Dashboard



Headmaster Dashboard



Parent's Dashboard



Federal Dashboard

